

TARGETPROCESS PERFORCE INTEGRATION GUIDE



v.2.14

Perforce Integration Guide

This document describes Perforce plugin configuration.

PERFORCE INTEGRATION OVERVIEW	2
INSTALL PERFORCE ON THE SERVER	3
CONFIGURE PERFORCE PLUGIN IN TARGETPROCESS	3
STEP 1: PERFORCE CONNECTION	4
STEP 2: PROJECTS	5
STEP 3: START REVISION	5
STEP 4: USERS MAPPING.....	5
STEP 5: CODE PAGE SETTINGS	6
HOW TO CHECK SYNCHRONIZATION RESULTS	6
OTHER	8

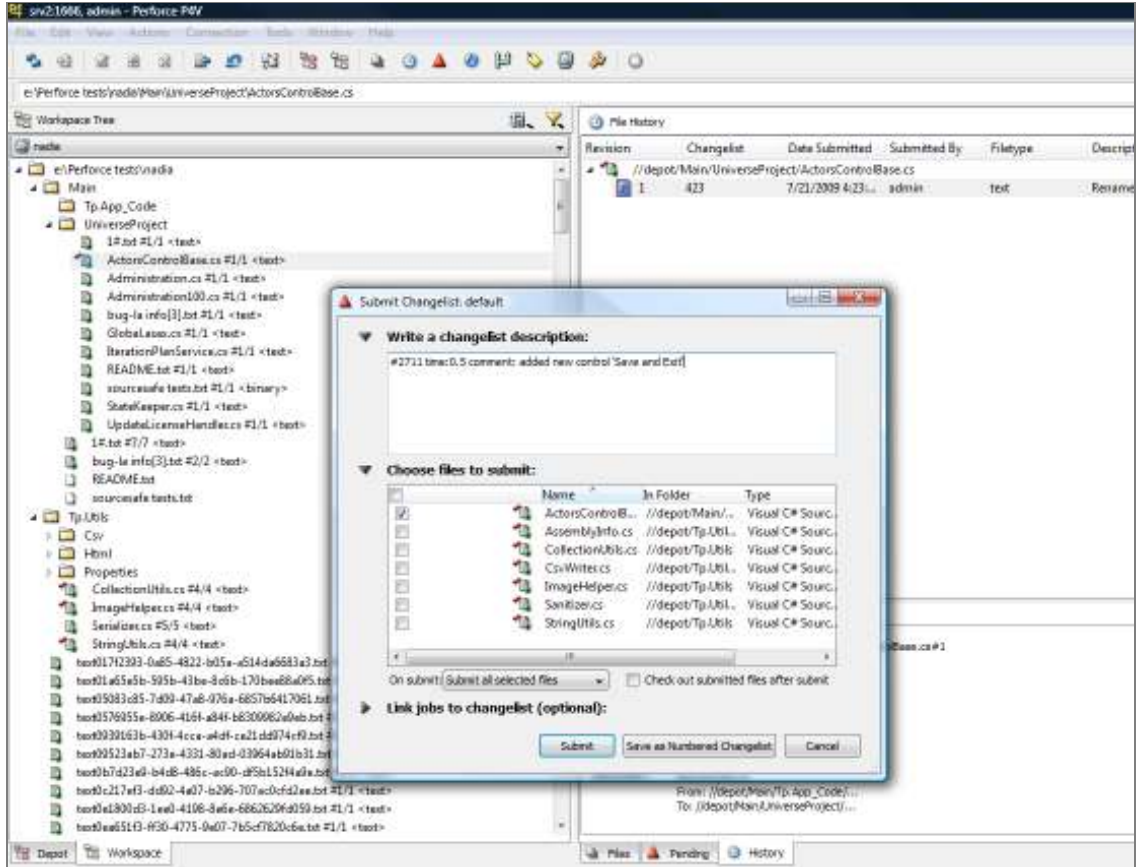
Perforce Integration Overview

Integration with Perforce allows developers to avoid some repetitious actions in TargetProcess related to Bugs fixing, User Stories and Tasks implementations and committing files to source control system by using comment in a special syntax. TargetProcess will automatically perform actions stated in a single comment.

NOTE: #ID may represent Bug ID, User Story ID or Task ID.

By the use of the comment on commit in Perforce users can do the following:

1. Change defect states
#ID state:fixed
2. Add comments to defect:
#ID comment: text of your comment here
comment: this is a second multiline comment row1
row2
3. Add time spent only
#ID time:1
4. Update time spent and time remaining.
#ID time:1:12
5. Update several defects at one time
#ID,#ID comment: will not be fixed state: invalid time:0.5



Install Perforce on the Server

It is required to install Perforce on the server because TargetProcess uses Perforce components for integration.

Configure Perforce Plugin in TargetProcess

Go to [Admin](#) -> [Plugins](#) and click 'Add Profile' link for Perforce Integration in Source Control section. The profile form will appear. You should specify Profile Name. It is recommended to use project name in profile name, since each profile usually relates to exactly one project.

Step 1: Perforce Connection

You should specify several parameters to enable connection to Perforce server:

- Path To Project: URI to the Perforce server and depot.
- Sync Interval: specifies the frequency of retrieving changes from Perforce. Cannot be less than 5 minutes
- Perforce Login and Password: Username and password of a person who has permissions to the project in Perforce.

Perforce Connection

Path To Project
 URI to the Perforce server and depot. Ex: p4://public.perforce.com:1666/public/

Sync Interval
 Specify sync interval in minutes (short intervals may reduce system performance)

Perforce Authentication

Perforce Login

Perforce Password

Step 2: Projects

Each Perforce Integration profile relates to one and only one project. It means if you want to enable integration for several projects you should create several profiles.

Project drop-down list will display only those projects that have 'Source Control' practice enabled ([Admin](#) > [Processes](#)).

Step 3: Start Revision

You can also specify the revision number and TargetProcess will retrieve only changes from all revisions above this number.

Step 4: Users Mapping

TargetProcess should know who will be the author of particular commitments. By default TargetProcess tries to find login that matches Perforce username. For example, if you have registered Perforce user with username Jackson and have user with the same login name in TargetProcess, it will be fine. But if there is no such login name in TargetProcess, it is required to map users in Users Mapping section.

You can map Perforce username to user email or login in TargetProcess:

[Jackson -> sb@targetprocess.com] or [Jackson -> SpongeBob]

Users Mapping

Users
Specify Perforce-to-TargetProcess users mapping by username or email (Ex: TeddyBear -> teddy@targetprocess.com). Required for correct revisions import.

Perforce	TargetProcess	
Jackson	SpongeBob	Edit Del
Perforce	TargetProcess	
<input type="text"/>	→ <input type="text"/>	Add

Step 5: Code Page settings

If your Perforce Server is switched into Unicode mode, you should select the same code in this section for proper display of changes imported from Perforce to TP.

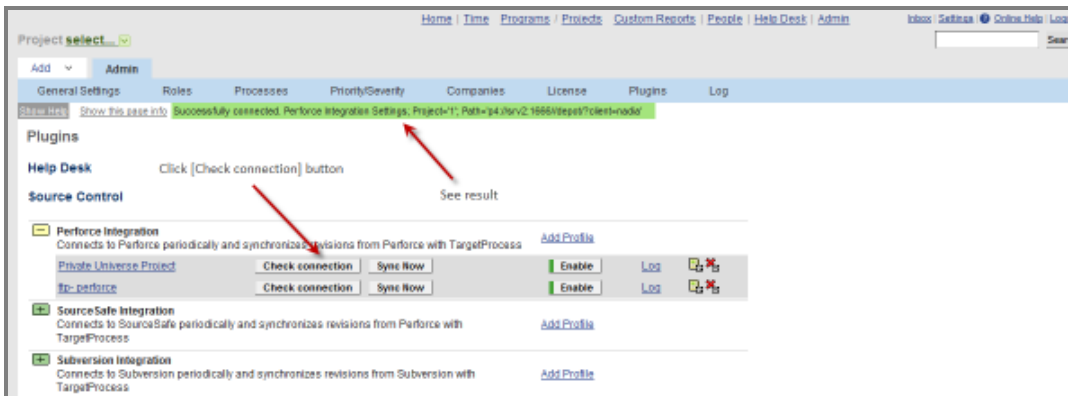
CodePage Settings

Code Page
Specify Perforce CodePage Settings

Unicode (UTF-8)

How to Check Synchronization Results

Save profile settings (find **Save & Exit** button at the bottom of the form). Click the **Check connection** button for created profile to ensure that all settings are correct and TargetProcess can access the repository.

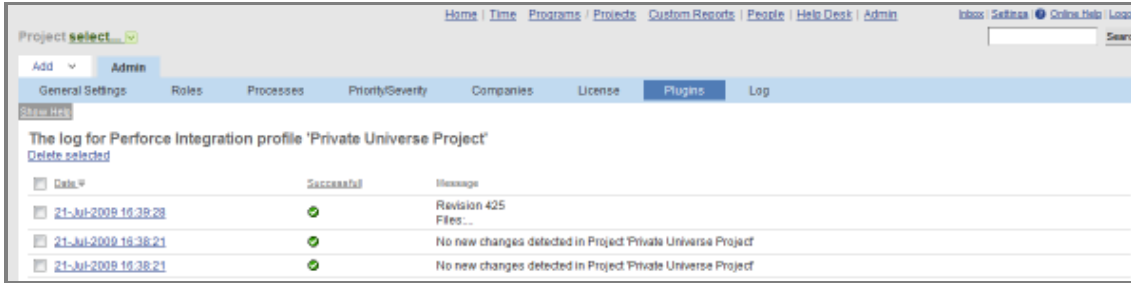


Click **Enable** button and plugin will start synchronizing.

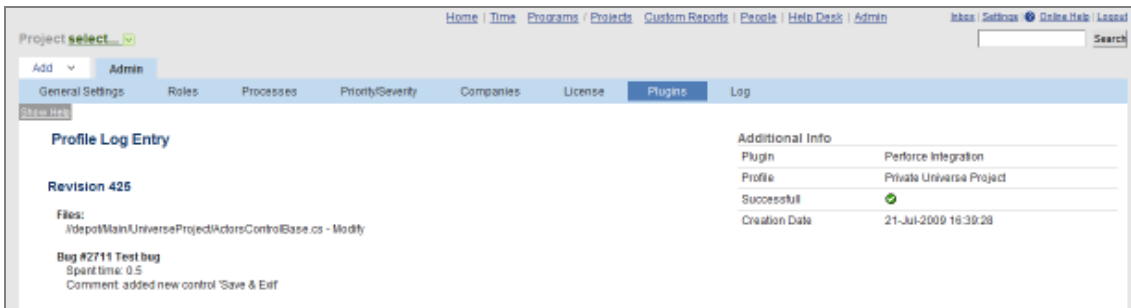
Perforce synchronization will be run as frequently as configured in your plugin profile.

If you need to force the synchronization immediately, you have to disable running profile and then click **Synch Now** button.

To check sync results, click **Log** link for plugin profile. You will see sync log.



The log shows all sync sessions with results. You may click on date to see sync session details: committed file names and information about particular changes done in revision and errors description (if any).



After synchronization you can view committed changes in 'Source' tab of detailed view of particular Bug, User Story or Task. From this page you can view added/modified files or view the difference of current and previous versions of the files committed.



Other

Please, email to **support@targetprocess.com** if any problems with Perforce integration.

Visit support forum at <http://support.targetprocess.com> or TargetProcess Help Desk at <http://helpdesk.targetprocess.com>

If you have any questions about TargetProcess, just contact us:

Email: info@targetprocess.com

Web: <http://www.targetprocess.com>